

PLEASE CLICK ON THE PAGE NUMBER TO MOVE TO THE RELEVANT PAGE.

### KEY HIGHLIGHTS

#### Sector

#### REITs

Benefitting from normalisation of leisure and business travel.

Page 2

#### TRADERS' CORNER

**Singapore Post (SPOST SP):** Trading BUY

**Best World International (BEST SP):** Trading BUY

Page 4

### KEY INDICES

	Prev Close	1D %	1W %	1M %	YTD %
DJIA	34440.9	(0.2)	(0.4)	(0.1)	3.9
S&P 500	4402.2	(0.9)	(1.5)	0.1	14.7
FTSE 100	7705.5	(0.3)	0.4	6.2	3.4
AS30	7266.6	(1.3)	(1.6)	(1.1)	0.6
CSI 300	3672.5	(0.9)	(1.6)	(2.3)	(5.1)
FSSTI	3202.8	(1.2)	(1.4)	1.4	(1.5)
HSCEI	6099.3	(1.3)	(2.8)	0.0	(9.0)
HSI	17655.4	(1.3)	(2.2)	(0.8)	(10.7)
JCI	6991.5	(0.3)	0.5	1.1	2.1
KLCI	1448.2	(0.2)	(0.1)	(0.2)	(3.2)
KOSPI	2515.0	(1.7)	(2.3)	(0.0)	12.5
Nikkei 225	32571.0	(1.4)	(0.4)	2.2	24.8
SET	1514.3	0.4	(2.0)	(2.0)	(9.3)
TWSE	16316.7	(1.3)	(2.9)	(0.7)	15.4
BDI	1569	(0.9)	17.1	28.3	3.6
CPO (RM/mt)	3690	1.6	1.2	(4.8)	(8.9)
Brent Crude (US\$/bbl)	94	0.3	0.2	11.1	9.2

Source: Bloomberg

### TOP VOLUME

Company	Price (S\$)	Chg (%)	Volume ('000s)
Seatrium	0.13	(1.5)	406,894
Yangzijiang Shipbuilding	1.74	4.2	30,463
Capitaland Integrated Comm	1.89	(1.6)	17,274
Genting Singapore	0.86	(1.7)	16,890
Singapore Telecommunications	2.43	(1.2)	16,654

### TOP GAINERS

Company	Price (S\$)	Chg (%)	Volume ('000s)
Yangzijiang Shipbuilding	1.74	4.2	30,463
DFI Retail Group Holdings	2.73	2.2	953
Yangzijiang Financial Holding	0.37	1.4	3,045
Singapore Post	0.52	1.0	4,147
Emperador Inc	0.53	1.0	2,899

### TOP LOSERS

Company	Price (S\$)	Chg (%)	Volume ('000s)
Top Glove Corp	0.23	(4.2)	4,283
Fraser's Property	0.83	(2.9)	259
Mapletree Logistics Trust	1.67	(2.9)	7,444
Yanlord Land Group	0.69	(2.8)	363
Mapletree Pan Asia Com Trust	1.47	(2.6)	12,212

### KEY ASSUMPTIONS

GDP (% yoy)	2022	2023F	2024F
US	2.1	0.8	1.2
Euro Zone	3.5	0.1	1.0
Japan	1.0	1.0	1.5
Singapore	3.6	0.7	3.0
Malaysia	8.7	4.4	4.6
Thailand	2.6	3.1	3.5
Indonesia	5.4	4.9	5.2
Hong Kong	-3.5	4.6	3.0
China	3.0	5.0	4.6
CPO (RM/mt)	5,088	4,000	4,200
Brent (Average) (US\$/bbl)	99.0	81.0	84.0

Source: Bloomberg, UOB ETR, UOB Kay Hian

SECTOR UPDATE

REITs – Singapore

Benefitting From Normalisation Of Leisure And Business Travel

The recovery of the hospitality segment is driven by the normalisation of leisure and business travel and return of Chinese tourists. We see a seasonally stronger 2H23 and continued recovery in 2024. Growth is supported by large-scale MICE events and enhancements to Singapore’s tourism infrastructure. The sector provides an attractive 2024 distribution yield of 6.4% and trades at a low P/NAV of 0.77x. BUY FEHT (Target: S\$0.75) and CLAS (Target: S\$1.35), followed by CDREIT (Target: S\$1.48). Maintain OVERWEIGHT.

WHAT’S NEW

- **Travel enriches our life experiences.** Consumers are shifting from material purchases (clothing, jewellery, electronic gadgets and furniture) to experiential purchases (travel, restaurant meals and sporting events) as happiness from experiences is more lasting. As such, the travel & tourism sector is expected to grow at a 10-year CAGR of 5% to US\$15.5t in 2033, reaching 11.6% of global GDP (2023: 9.2%).
- **Chinese tourists making their mark.** With surging Chinese visitor arrivals, China has regained its stature as the largest source market for Singapore since Jul 23. Chinese tourist arrivals grew 14x yoy to 214,491 in Aug 23, reaching 54% of pre-pandemic levels. There is room for further recovery as Chinese tourists accounted for a smaller 9.7% of total visitor arrivals during 8M23 compared with 19.0% in 2019. The volume of Chinese guests is expected to increase during the National Day Golden Week in Oct 23, which coincides with the Mid-Autumn Festival.
- **Restoration of flights supports recovery of hospitality segment.** Airlines’ passenger capacity is a leading indicator of the recovery in cross-border travel. The number of flights at Changi Airport increased 41.9% yoy to 29,000 in Aug 23, reaching 89.6% of pre-pandemic levels. Airlines will be adding more flights and destinations, which will further support the recovery of visitor arrivals and the hospitality segment in 2024.
- **Investing to enhance Singapore’s tourism infrastructure.** Hospitality REITs will benefit from a series of government initiatives to develop new tourism attractions, including expansion at Marina Bay Sands and Resorts World Sentosa, Mandai Nature Precinct and the Sentosa-Brani Master Plan. At Resorts World Sentosa, Minion Land and Singapore Oceanarium are scheduled to open in early-25. Sentosa Island and Pulau Brani will be rejuvenated and redeveloped into five distinct zones under the Sentosa-Brani Master Plan in phases over the next 2-3 decades.
- **Singapore becoming more hospitable.** We are optimistic of the recovery of the hospitality segment in Singapore driven by the normalisation of leisure and business travel and return of Chinese tourists. Key beneficiaries are FEHT (pure play on Singapore) and CDREIT (Singapore accounted for 66.3% of portfolio valuation as of Dec 22 and 61.5% of 1H23 NPI).
- **Far East Hospitality Trust (BUY/Target: S\$0.75)** is well-positioned for expansion overseas due to low aggregate leverage of 32.0% as of Jun 23. We like CapitaLand Ascott Trust (BUY/Target: S\$1.35) for its geographical diversification, expansion to longer-stay properties and resilient balance sheet. CDL Hospitality Trusts (BUY/Target: S\$1.48) will benefit from increased contributions from Grand Copthorne Waterfront Hotel during the seasonally stronger 2H23, continued recovery from Germany and Italy, and contributions from the build-to-rent project The Casting in the UK starting in 2H24.

Click [here](#) for Blue Top dated 21 Sep 23

PEER COMPARISON

Company	Ticker	Rec	Price 20 Sep 23 (S\$)	Target Price (S\$)	Mkt Cap (US\$m)	Yield (%)				Debt to Equity (%)	Debt to Assets (%)	P/NAV (x)
						2022	2023F	2024F	2025F			
CapLand Ascott	CLAS SP	BUY	0.99	1.35	2,715	5.8	5.7	6.3	6.4	74.5	38.6	0.86
CDL HTrust	CDREIT SP	BUY	1.06	1.48	967	5.3	5.8	6.6	6.6	64.3	37.9	0.75
Far East HTrust	FEHT SP	BUY	0.63	0.75	924	5.2	6.1	6.4	5.8	40.9	32.0	0.70
Frasers HTrust	FHT SP	NR	0.50	n.a.	706	3.3	4.6	5.2	6.2	57.2	35.3	0.78

Source: Bloomberg, UOB Kay Hian

OVERWEIGHT

(Maintained)

SECTOR PICKS

Company	Ticker	Rec	Share Price (S\$)	Target Price (S\$)
CLAS	CLAS SP	BUY	0.99	1.35
CDREIT	CDREIT SP	BUY	1.06	1.48
FEHT	FEHT SP	BUY	0.63	0.75

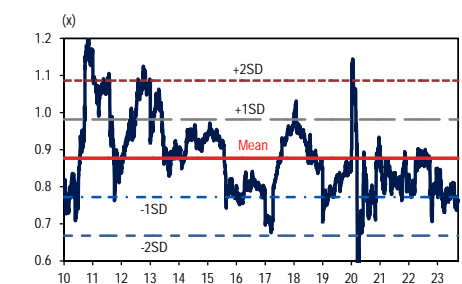
Source: UOB Kay Hian

YIELD SPREAD FOR HOSPITALITY REITs



Source: UOB Kay Hian

P/NAV FOR HOSPITALITY REITs



Source: UOB Kay Hian

ANALYST(S)

**Jonathan Koh, CFA, MSc Econs**  
 +65 6590 6620  
 jonathankoh@uobkayhian.com

**ACTION**

• **Singapore becoming more hospitable.** Hospitality REITs provide an attractive distribution yield of 6.4% and yield spread of 3.1% for 2024. They trade at a P/NAV of 0.77x (23% discount to NAV). The segment will benefit from the return of Chinese tourists, a seasonally stronger 2H23 and a continued recovery in 2024.

**Capitaland Ascott Trust (CLAS SP/BUY/Target: S\$1.35)**

- Portfolio RevPAU grew 20% yoy to S\$149 in 2Q23 (98% of pre-pandemic levels). There is room to improve portfolio occupancy during the seasonally stronger 2H23 (1H23: 75%).
- Longer-stay properties, such as student accommodation and rental housing properties, contributed 17% of gross profit in 1H23 and accounted for 19% of portfolio valuations. The 678-bed Standard at Columbia in South Carolina has a pre-leased occupancy of 90% and has been receiving its first batch of students for 2023-24 starting Aug 23.
- CLAS has a resilient balance sheet with aggregate leverage at 38.6% as of Jun 23. Adjusted interest coverage ratio was 4.3x and its weighted average debt to maturity was 3.6 years.
- **Maintain BUY.** Our target price of S\$1.35 is based on DDM (cost of equity: 7.25%, terminal growth: 2.8%).

**CDL Hospitality Trusts (CDREIT SP/BUY/Target: S\$1.48)**

- CDREIT's six Singapore hotels will benefit from higher occupancies and increased contributions from Grand Copthorne Waterfront Hotel (GCWH) during the seasonally stronger 2H23. Visitor arrivals have picked up since July as Singapore becomes a preferred destination for well-heeled Chinese tourists.
- CDREIT will benefit from the continued recovery in Germany and Italy. Pullman Hotel Munich benefits from the pick-up in events during 2H23, including Oktoberfest and IAA Mobility in September. Hotel Cerretani Firenze benefits from the return of Asian travellers.
- Residential build-to-rent project The Casting in the UK will start contributing in 2H24. Asking rents for one-bed, two-bed and three-bed units increased 10-15% yoy in Jun 23.
- **Maintain BUY.** Our target price of S\$1.48 is based on DDM (cost of equity: 7.25%, terminal growth: 2.8%).

**Far East Hospitality Trust (FEHT SP/BUY/Target: S\$0.75)**

- FEHT is a pure play on the hospitality segment with nine hotels and three serviced residences in Singapore. Five hotels, namely Vibe Hotel Orchard, The Quincy Hotel, Village Hotel Bugis, Oasia Hotel Novena and Orchard Rendevous Hotel (51% of portfolio valuation), are located near major hospitals popular among medical tourists.
- FEHT focuses on mid-tier and upscale hotels, which are well patronised by value-conscious tourists from China, India, Indonesia and Malaysia (breakdown of hotel revenue in 1H23: North Asia 18.7%, Southeast Asia 22.2% and South Asia 8.8%).
- Aggregate leverage was low at 32.0% as of Jun 23. FEHT is scouting for opportunities to invest in limited-service, midscale and upscale hotels at gateway cities in developed markets.
- **Maintain BUY.** Our target price of S\$0.75 is based on DDM (cost of equity: 7.5%, terminal growth: 2.8%).

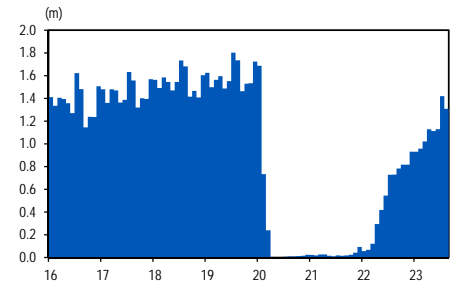
**SECTOR CATALYSTS**

- Continued recovery of visitor arrivals in 2H23 and 2024.
- Limited growth in supply of hotels and serviced residences at CAGR of 3.1%.

**RISKS**

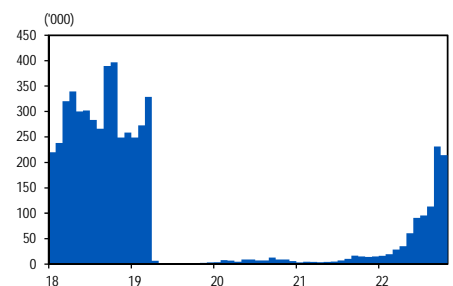
- Interest rates staying at elevated levels for a prolonged period of time.
- Escalation of geopolitical tension within the Asia pacific region.

**VISITOR ARRIVALS – TOTAL**



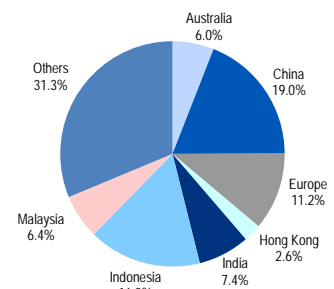
Source: STB

**VISITOR ARRIVALS – MAINLAND CHINA**



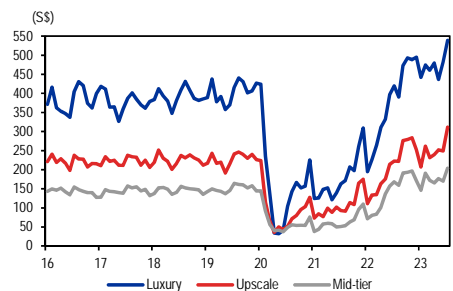
Source: STB

**VISITOR ARRIVALS BY COUNTRY (2019)**



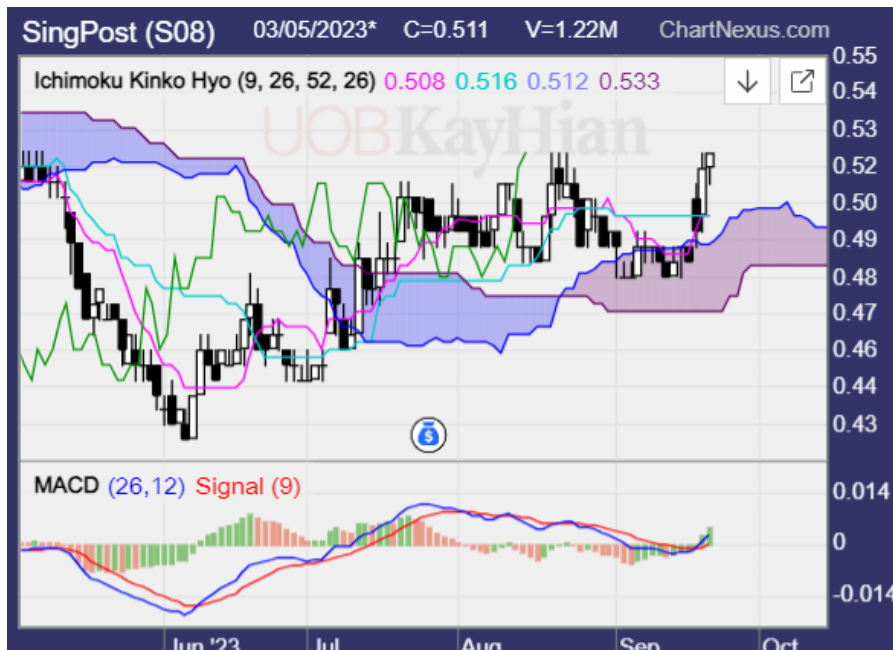
Source: STB

**HOTEL REVPAR – SINGAPORE**



Source: STB

### TRADERS' CORNER



### Singapore Post (SPOST SP)

Trading buy range: S\$0.510-0.515

Last price: S\$0.520

Target price: S\$0.570

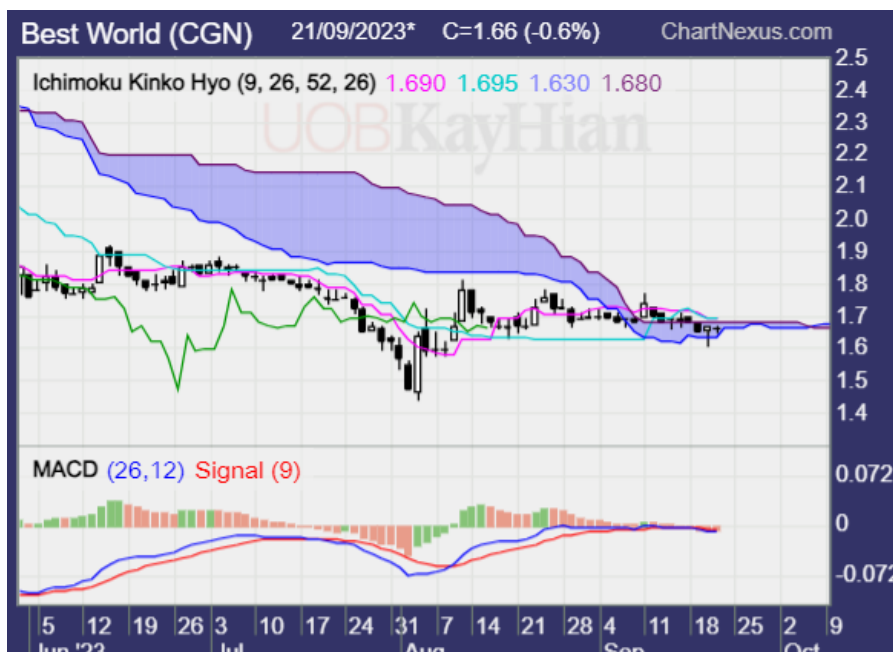
Protective stop: S\$0.490

**Price rebounded after being supported by the cloud, keeping the uptrend intact. A bullish conversion and base lines crossover is likely. The MACD remains bullish and it is rising. These could increase chances of the stock price continuing to move higher.**

The potential upside target is S\$0.57. Stop-loss could be placed at S\$0.49.

Approximate timeframe on average: 1-2 weeks (initiate this trade idea if the stock hits the entry price range within three trading days)

Our institutional research has a fundamental HOLD and target price of S\$0.515.



### Best World International (BEST SP)

Trading buy range: S\$1.65-1.66

Last price: S\$1.66

Target price: S\$1.87

Protective stop: S\$1.59

**Price is being supported by the cloud support, keeping the uptrend intact. A hammer was formed yesterday, and this needs to be followed by the formation of a bullish candle to confirm the rebound. A bullish MACD crossover is likely. These could increase chances of the stock price moving higher.**

The potential upside target is S\$1.87. Stop-loss could be placed at S\$1.59.

Approximate timeframe on average: 1-2 weeks (initiate this trade idea if the stock hits the entry price range within three trading days)

#### ANALYST(S)

**Wong Shueh Ting, CFTe**

+65 6590 6616

shuehting@uobkayhian.com

## Disclosures/Disclaimers

This report is prepared by UOB Kay Hian Private Limited ("UOBKH"), which is a holder of a capital markets services licence and an exempt financial adviser in Singapore.

This report is provided for information only and is not an offer or a solicitation to deal in securities or to enter into any legal relations, nor an advice or a recommendation with respect to such securities.

**This report is prepared for general circulation.** It does not have regard to the specific investment objectives, financial situation and the particular needs of any recipient hereof. Advice should be sought from a financial adviser regarding the suitability of the investment product, taking into account the specific investment objectives, financial situation or particular needs of any person in receipt of the recommendation, before the person makes a commitment to purchase the investment product.

This report is confidential. This report may not be published, circulated, reproduced or distributed in whole or in part by any recipient of this report to any other person without the prior written consent of UOBKH. This report is not directed to or intended for distribution to or use by any person or any entity who is a citizen or resident of or located in any locality, state, country or any other jurisdiction as UOBKH may determine in its absolute discretion, where the distribution, publication, availability or use of this report would be contrary to applicable law or would subject UOBKH and its connected persons (as defined in the Financial Advisers Act, Chapter 110 of Singapore) to any registration, licensing or other requirements within such jurisdiction.

The information or views in the report ("Information") has been obtained or derived from sources believed by UOBKH to be reliable. However, UOBKH makes no representation as to the accuracy or completeness of such sources or the Information and UOBKH accepts no liability whatsoever for any loss or damage arising from the use of or reliance on the Information. UOBKH and its connected persons may have issued other reports expressing views different from the Information and all views expressed in all reports of UOBKH and its connected persons are subject to change without notice. UOBKH reserves the right to act upon or use the Information at any time, including before its publication herein.

Except as otherwise indicated below, (1) UOBKH, its connected persons and its officers, employees and representatives may, to the extent permitted by law, transact with, perform or provide broking, underwriting, corporate finance-related or other services for or solicit business from, the subject corporation(s) referred to in this report; (2) UOBKH, its connected persons and its officers, employees and representatives may also, to the extent permitted by law, transact with, perform or provide broking or other services for or solicit business from, other persons in respect of dealings in the securities referred to in this report or other investments related thereto; (3) the officers, employees and representatives of UOBKH may also serve on the board of directors or in trustee positions with the subject corporation(s) referred to in this report. (All of the foregoing is hereafter referred to as the "Subject Business"); and (4) UOBKH may otherwise have an interest (including a proprietary interest) in the subject corporation(s) referred to in this report.

As of the date of this report, no analyst responsible for any of the content in this report has any proprietary position or material interest in the securities of the corporation(s) which are referred to in the content they respectively author or are otherwise responsible for.

**IMPORTANT DISCLOSURES FOR U.S. PERSONS**

This research report was prepared by UOBKH, a company authorized, as noted above, to engage in securities activities in Singapore. UOBKH is not a registered broker-dealer in the United States and, therefore, is not subject to U.S. rules regarding the preparation of research reports and the independence of research analysts. This research report is provided for distribution by UOBKH (whether directly or through its US registered broker dealer affiliate named below) to "major U.S. institutional investors" in reliance on the exemption from registration provided by Rule 15a-6 of the U.S. Securities Exchange Act of 1934, as amended (the "Exchange Act"). All US persons that receive this document by way of distribution from or which they regard as being from UOBKH by their acceptance thereof represent and agree that they are a major institutional investor and understand the risks involved in executing transactions in securities.

Any U.S. recipient of this research report wishing to effect any transaction to buy or sell securities or related financial instruments based on the information provided in this research report should do so only through UOB Kay Hian (U.S.) Inc ("UOBKHUS"), a registered broker-dealer in the United States. Under no circumstances should any recipient of this research report effect any transaction to buy or sell securities or related financial instruments through UOBKH.

UOBKHUS accepts responsibility for the contents of this research report, subject to the terms set out below, to the extent that it is delivered to and intended to be received by a U.S. person other than a major U.S. institutional investor.

The analyst whose name appears in this research report is not registered or qualified as a research analyst with the Financial Industry Regulatory Authority ("FINRA") and may not be an associated person of UOBKHUS and, therefore, may not be subject to applicable restrictions under FINRA Rules on communications with a subject company, public appearances and trading securities held by a research analyst account.

### Analyst Certification/Regulation AC

Each research analyst of UOBKH who produced this report hereby certifies that (1) the views expressed in this report accurately reflect his/her personal views about all of the subject corporation(s) and securities in this report; (2) the report was produced independently by him/her; (3) he/she does not carry out, whether for himself/herself or on behalf of UOBKH or any other person, any of the Subject Business involving any of the subject corporation(s) or securities referred to in this report; and (4) he/she has not received and will not receive any compensation that is directly or indirectly related or linked to the recommendations or views expressed in this report or to any sales, trading, dealing or corporate finance advisory services or transaction in respect of the securities in this report. However, the compensation received by each such research analyst is based upon various factors, including UOBKH's total revenues, a portion of which are generated from UOBKH's business of dealing in securities.

Reports are distributed in the respective countries by the respective entities and are subject to the additional restrictions listed in the following table.

General	This report is not intended for distribution, publication to or use by any person or entity who is a citizen or resident of or located in any country or jurisdiction where the distribution, publication or use of this report would be contrary to applicable law or regulation.
Hong Kong	This report is distributed in Hong Kong by UOB Kay Hian (Hong Kong) Limited ("UOBKHHK"), which is regulated by the Securities and Futures Commission of Hong Kong. Neither the analyst(s) preparing this report nor his associate, has trading and financial interest and relevant relationship specified under Para. 16.4 of Code of Conduct in the listed corporation covered in this report. UOBKHHK does not have financial interests and business relationship specified under Para. 16.5 of Code of Conduct with the listed corporation covered in this report. Where the report is distributed in Hong Kong and contains research analyses or reports from a foreign research house, please note: (i) recipients of the analyses or reports are to contact UOBKHHK (and not the relevant foreign research house) in Hong Kong in respect of any matters arising from, or in connection with, the analysis or report; and (ii) to the extent that the analyses or reports are delivered to and intended to be received by any person in Hong Kong who is not a professional investor, or institutional investor, UOBKHHK accepts legal responsibility for the contents of the analyses or reports only to the extent required by law.
Indonesia	This report is distributed in Indonesia by PT UOB Kay Hian Sekuritas, which is regulated by Financial Services Authority of Indonesia ("OJK"). Where the report is distributed in Indonesia and contains research analyses or reports from a foreign research house, please note recipients of the analyses or reports are to contact PT UOBKH (and not the relevant foreign research house) in Indonesia in respect of any matters arising from, or in connection with, the analysis or report.
Malaysia	Where the report is distributed in Malaysia and contains research analyses or reports from a foreign research house, the recipients of the analyses or reports are to contact UOBKHM (and not the relevant foreign research house) in Malaysia, at +603-21471988, in respect of any matters arising from, or in connection with, the analysis or report as UOBKHM is the registered person under CMSA to distribute any research analyses in Malaysia.
Singapore	This report is distributed in Singapore by UOB Kay Hian Private Limited ("UOBKH"), which is a holder of a capital markets services licence and an exempt financial adviser regulated by the Monetary Authority of Singapore. Where the report is distributed in Singapore and contains research analyses or reports from a foreign research house, please note: (i) recipients of the analyses or reports are to contact UOBKH (and not the relevant foreign research house) in Singapore in respect of any matters arising from, or in connection with, the analysis or report; and (ii) to the extent that the analyses or reports are delivered to and intended to be received by any person in Singapore who is not an accredited investor, expert investor or institutional investor, UOBKH accepts legal responsibility for the contents of the analyses or reports only to the extent required by law.
Thailand	This report is distributed in Thailand by UOB Kay Hian Securities (Thailand) Public Company Limited, which is regulated by the Securities and Exchange Commission of Thailand.
United Kingdom	This report is being distributed in the UK by UOB Kay Hian (U.K.) Limited, which is an authorised person in the meaning of the Financial Services and Markets Act and is regulated by The Financial Conduct Authority. Research distributed in the UK is intended only for institutional clients.
United States of America ('U.S.')	This report cannot be distributed into the U.S. or to any U.S. person or entity except in compliance with applicable U.S. laws and regulations. It is being distributed in the U.S. by UOB Kay Hian (US) Inc, which accepts responsibility for its contents. Any U.S. person or entity receiving this report and wishing to effect transactions in any securities referred to in the report should contact UOB Kay Hian (US) Inc. directly.

Copyright 2023, UOB Kay Hian Pte Ltd. All rights reserved.

<http://research.uobkayhian.com>

RCB Regn. No. 197000447W