

PLEASE CLICK ON THE PAGE NUMBER TO MOVE TO THE RELEVANT PAGE.

KEY HIGHLIGHTS

Update

Rex International Holding (REXI SP/SELL/\$0.17/Target: \$0.10) Page 2
 Not much to cheer about heading into the festive season as production problems at key Yumna field persist. Retain SELL rating.

TRADERS' CORNER

Propnex (PROP SP): Trading BUY Page 5

Medtecs International (MED SP): Trading SELL

KEY INDICES

	Prev Close	1D %	1W %	1M %	YTD %
DJIA	35390.2	0.3	1.3	9.2	6.8
S&P 500	4559.3	0.1	1.1	10.7	18.7
FTSE 100	7488.2	0.1	(0.2)	2.7	0.5
AS30	7244.1	0.1	(0.2)	3.3	0.3
CSI 300	3538.0	(0.7)	(0.8)	(0.7)	(8.6)
FSSTI	3094.8	(0.5)	(1.0)	1.1	(4.8)
HSCEI	6041.2	(2.1)	1.1	1.0	(9.9)
HSI	17559.4	(2.0)	0.6	0.9	(11.2)
JCI	7009.6	0.1	0.5	3.7	2.3
KLCI	1453.9	0.0	(0.5)	0.8	(2.8)
KOSPI	2496.6	(0.7)	1.1	8.4	11.6
Nikkei 225	33625.5	0.5	0.6	8.5	28.9
SET	1397.4	(0.7)	(1.3)	0.7	(16.3)
TWSE	17287.4	(0.0)	0.5	7.1	22.3
BDI	2102	13.3	15.5	34.5	38.7
CPO (RM/mt)	3827	(0.4)	(0.5)	4.1	(5.5)
Brent Crude (US\$/bbl)	81	(1.0)	(0.0)	(8.5)	(6.2)

Source: Bloomberg

TOP TRADING TURNOVER

Company	Price (S\$)	Chg (%)	5-day ADT (\$m)
DBS Group Holdings	31.82	(0.4)	117.1
Singapore Telecommunications	2.26	(0.9)	76.4
CapitaLand Ascendas Reit	2.83	0.4	38.5
Oversea-Chinese Banking Corp	12.67	(0.9)	37.9
United Overseas Bank	27.29	(0.3)	37.6

TOP GAINERS

Company	Price (S\$)	Chg (%)	5-day ADT (\$m)
Mandarin Oriental -Jers Reg	1.70	6.9	0.0
Propnex	0.88	3.5	0.2
Golden Agri-Resources	0.27	1.9	3.0
Hour Glass Ltd/The	1.66	1.8	0.8
Thomson Medical Group	0.06	1.8	0.2

TOP LOSERS

Company	Price (S\$)	Chg (%)	5-day ADT (\$m)
Sri Trang Agro-Industry-For	0.59	(7.1)	0.0
Olam Group	1.03	(2.8)	1.2
Nio Inc-Class A	7.57	(2.7)	0.8
DFI Retail Group Holdings	2.23	(2.6)	0.9
Digital Core Reit Management	0.59	(2.5)	1.6

*ADT: Average daily turnover

KEY ASSUMPTIONS

GDP (% yoy)	2022	2023F	2024F
US	2.1	2.0	1.0
Euro Zone	3.5	0.5	0.8
Japan	1.0	1.5	1.0
Singapore	3.6	0.7	3.0
Malaysia	8.7	4.0	4.6
Thailand	2.6	3.1	3.5
Indonesia	5.4	5.1	5.2
Hong Kong	-3.5	4.6	3.0
China	3.0	5.0	4.6
CPO (RM/mt)	5,088	4,000	4,200
Brent (Average) (US\$/bbl)	99.0	81.0	84.0

Source: Bloomberg, UOB ETR, UOB Kay Hian

COMPANY UPDATE

Rex International Holding (REXI SP)

Not Much To Cheer About Heading Into The Festive Season

Rex’s latest production update for Oct 23 did not provide much cause for cheer due to continued travails at its Yumna Field. At present, it is shut down with no visibility as to when production can resume. The Brage Field meanwhile has brought on-stream two new wells; however, we note the lack of disclosure on production numbers. In early-Nov 23, Rex bought a 17% stake in the Brasse Field offshore Norway for an undisclosed sum. Maintain SELL. Target price: S\$0.10.

WHAT’S NEW

- **Yumna still hobbling towards the company’s 20,000bpd production target.** In Rex International’s (Rex) latest production update for Oct 23, the company disclosed that its Yumna Field in offshore Block 50 in Oman (Rex equity stake: 91.81%) only managed an anaemic 1,304bpd of oil production, declining 20% mom and 65% yoy. The latest problem at Yumna was a production shutdown on 25 Oct 23 due to “damage to the internal pressure containing liner of the newly installed larger flowline”. No guidance was given as to when the field, which produced an average of nearly 11,000bpd in 2021, would be re-started. With Yumna continuing to underperform, Rex’s average production ytd stands at just over 9,000bpd and is far from its 20,000bpd target.
- **Lack of disclosure continues to be an issue.** While it is positive that the company’s combined production from the Brage and Yme fields in Norway exceeded 10,000bpd in the last week of Oct 23, we highlight that unlike its previous production reports, the company did not present a breakdown of production from these two fields. This may imply that the Yme field continues to experience problems given the higher-than-expected water cuts that have been reported by its operator in the past. Brage meanwhile has remained a strong performer with a new well brought on-stream in late-Oct 23 and another in early-Nov 23, and recently made a 1mmbbl discovery.
- **Acquiring long-term production potential.** In early-Nov 23, Rex announced that its 91.65%-owned subsidiary Lime Petroleum will be acquiring a 17% stake in the Brasse Field located in the Norwegian sector of the North Sea. Production is expected to start in 2027 and the operator of the field has reported recoverable resources of between 21-29mmboe, of which 25-30% is gas (4mmboe net to Rex). According to Rex, it is unable to disclose the purchase price for Brasse given confidentiality issues. We have not incorporated this acquisition into our financial model given the paucity of information at present; however we note that Rex has indicated that the proximity of the Brasse field will have “significant positive synergies with Brage”.

KEY FINANCIALS

Year to 31 Dec (US\$m)	2021	2022	2023F	2024F	2025F
Net turnover	158	170	196	158	143
EBITDA	75	10	38	32	28
Operating profit	73	8	30	30	27
Net profit (rep./act.)	67	(1)	5	8	7
Net profit (adj.)	118	55	56	50	46
EPS (US\$ cent)	9.0	4.2	4.2	3.8	3.5
PE (x)	1.4	3.0	3.0	3.3	3.6
P/B (x)	0.9	0.9	1.0	1.1	1.0
EV/EBITDA (x)	3.2	23.4	6.2	7.5	8.5
Dividend yield (%)	2.9	2.9	11.7	11.7	0.0
Net margin (%)	42.4	(0.6)	2.3	5.3	4.8
Net debt/(cash) to equity (%)	(2.7)	(13.5)	33.8	22.7	3.0
Interest cover (x)	25.6	0.7	2.1	3.4	3.0
ROE (%)	42.8	n.a.	2.6	5.1	4.4
Consensus net profit	-	-	66	48	13
UOBKH/Consensus (x)	-	-	0.85	1.04	3.47

Source: REX International Holding, Bloomberg, UOB Kay Hian

SELL

(Maintained)

Share Price	S\$0.17
Target Price	S\$0.10
Upside	-40.8%

COMPANY DESCRIPTION

Rex International Holding Limited is a production and exploration oil company with concessions in Norway and Oman.

STOCK DATA

GICS sector	Energy
Bloomberg ticker:	REXI SP
Shares issued (m):	1,302.3
Market cap (S\$m):	220.1
Market cap (US\$m):	164.3
3-mth avg daily t'over (US\$m):	3.2

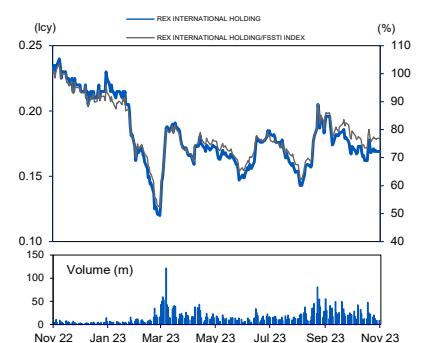
Price Performance (%)

52-week high/low	S\$0.240/S\$0.120			
1mth	3mth	6mth	1yr	YTD
(4.5)	7.6	(1.2)	(26.5)	(21.4)

Major Shareholders

	%
Limea Ltd	34.7
Bevoy Investment Ltd	6.0
FY23 NAV/Share (US\$)	0.13
FY23 Net Debt/Share (US\$)	0.04

PRICE CHART



Source: Bloomberg

ANALYST(S)

Llleythan Tan
+65 6590 6624
yirong@uobkayhian.com

John Cheong
+65 6590 6623
johncheong@uobkayhian.com

Adrian Loh
+65 6590 6633
adrianloh@uobkayhian.com

STOCK IMPACT

- Money not well spent.** Nearly 1.5 years after the successful hook-up and commissioning of the new floating storage tanker and Mobile Offshore Production Unit (MOPU) at its key Yumna asset offshore Oman, production remains problematic. Prior to the upgrades, Rex had guided for the new facility to double its liquids processing capacity to 30,000bpd. However since Jun 22, production was 1,300bpd prior to the recent shutdown vs production of 7,500-10,600bpd in the six months prior to the change-out of the MOPU. We understand that this is partly attributable to the lack of availability of jack-up rigs offshore Oman to service the problematic field. With a number of Middle Eastern national oil companies having tied up such assets, and the prohibitive cost of bringing in rigs from Europe or Asia, we believe that Yumna will continue to face production issues in the near to medium term.

EARNINGS REVISION/RISK

- No changes to our earnings forecasts.** However, we highlight downside risk to earnings given the company's continued poor production performance. Higher interest expense will also hit its bottom line given that as at end-1H23, it had net debt of US\$58.7m vs net cash of US\$27.0m at end-1H22.

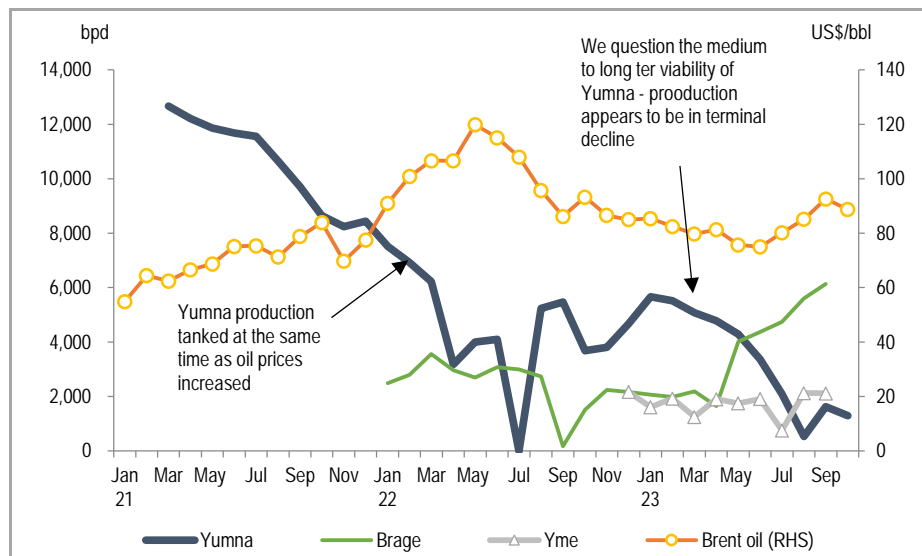
VALUATION/RECOMMENDATION

- We retain our SELL rating with a target price of S\$0.10.** While upstream oil & gas companies are traditionally valued using a discounted cash flow methodology, we have elected to use a target 0.5x P/B multiple instead due to our diminished confidence in the company's ability to execute on its oil production targets. On the asset valuation side, Rex currently trades on an EV/boe of US\$16.90 per barrel which appears attractive relative to current oil prices.

SHARE PRICE CATALYST

- Refraining from related-party transactions in sectors that are unrelated to oil and gas.
- Better consistency and reliability in delivering oil production numbers.
- Removal of the opacity surrounding its spending on M&A and capex items.

MONTHLY PRODUCTION FROM REX' S THREE KEY FIELDS VS BRENT OIL PRICE



Note: Production data for Brage and Yme not disclosed in Oct 23
Source: Rex International

POOR PRODUCTION AT KEY YUMNA FIELD

Month	bopd	Mgmt commentary
Mar 21	12,672	MOPU upgraded to handle 30k bpd of "liquids processing", wells tested at 20k bpd during the month
Apr	12,210	Nil
May	11,858	Nil
Jun	11,682	Nil
Jul	11,552	Nil
Aug	10,655	Production choked back: annual calibration of safety valves/upgrades to transfer pumps
Sep	9,709	Production choked back: planned maintenance & reservoir management
Oct	8,640	Production choked back: planned maintenance & reservoir management
Nov	8,234	Production choked back: planned maintenance & reservoir management
Dec	8,440	Production choked back: planned maintenance & reservoir management
Jan 22	7,518	Production choked back: planned maintenance & reservoir management
Feb	6,919	Change out of the MOPU at Yumna
Mar	6,227	Change out of the MOPU at Yumna
Apr	3,178	Change out of the MOPU at Yumna
May	4,000	No data announced for Yumna in May - production estimated by UOBKH
Jun	4,097	Replacement of flowline at Yumna
Jul	0	Change out of the MOPU at Yumna
Aug	5,236	Changed out damaged flowline at the Yumna MOPU
Sep	5,474	NA
Oct	3,678	Reduced production at Yumna due to drilling activities
Nov	3,811	Reduced production at Yumna due to drilling activities
Dec	4,673	Reduced production at Yumna due to drilling activities
Jan 23	5,664	NA
Feb	5,515	NA
Mar	5,076	NA
Apr	4,782	NA
May	4,287	NA
Jun	3,364	Yumna unplanned shutdown on 29/6/23
Jul	2,093	Yumna-3 unplanned electrical failure of ESP; Yme compressor related issues
Aug	533	Flowline issue at Yumna
Sep	1,620	NA
Oct	1,304	Flowline issue at Yumna. Well shut down from 25 Oct

Note: Oil production numbers and management comments relate only to Yumna, Source: Rex International

PROFIT & LOSS

Year to 31 Dec (US\$m)	2022	2023F	2024F	2025F
Net turnover	170	196	158	143
EBITDA	10	38	32	28
Deprec. & amort.	2	9	1	1
EBIT	8	30	30	27
Total other non-operating income	(1)	(2)	(2)	(2)
Associate contributions	0	0	0	0
Net interest income/(expense)	(14)	(18)	(9)	(9)
Pre-tax profit	(7)	10	19	15
Tax	7	(4)	(9)	(7)
Minorities	(1)	(1)	(2)	(1)
Net profit	(1)	5	8	7
Net profit (adj.)	55	56	50	46

CASH FLOW

Year to 31 Dec (US\$m)	2022	2023F	2024F	2025F
Operating	170	(19)	66	48
Pre-tax profit	(7)	10	19	15
Tax	7	(4)	(9)	(7)
Deprec. & amort.	2	9	1	1
Associates	0	0	0	0
Working capital changes	66	(87)	23	9
Non-cash items	1	0	0	0
Other operating cashflows	101	54	31	30
Investing	(137)	(32)	(31)	(28)
Capex (growth)	(1)	0	0	0
Investments	(1)	1	0	0
Others	(135)	(33)	(31)	(28)
Financing	22	(11)	(16)	5
Issue of shares	0	0	0	0
Proceeds from borrowings	0	17	0	0
Loan repayment	(50)	(17)	(5)	(5)
Others/interest paid	72	(12)	(11)	10
Net cash inflow (outflow)	54	(62)	18	25
Beginning cash & cash equivalent	61	116	53	72
Changes due to forex impact	1	0	0	0
Ending cash & cash equivalent	116	53	72	97

BALANCE SHEET

Year to 31 Dec (US\$m)	2022	2023F	2024F	2025F
Fixed assets	39	35	33	33
Other LT assets	398	384	366	351
Cash/ST investment	116	53	72	97
Other current assets	125	158	134	125
Total assets	677	631	605	605
ST debt	14	31	31	31
Other current liabilities	130	77	77	77
LT debt	78	81	76	71
Other LT liabilities	267	255	254	254
Shareholders' equity	177	174	155	161
Minority interest	12	12	12	12
Total liabilities & equity	677	631	605	605

KEY METRICS

Year to 31 Dec (%)	2022	2023F	2024F	2025F
Profitability				
EBITDA margin	5.9	19.5	20.0	19.3
Pre-tax margin	(3.9)	4.9	12.0	10.7
Net margin	(0.6)	2.3	5.3	4.8
ROA	n.a.	0.7	1.4	1.1
ROE	n.a.	2.6	5.1	4.4
Growth				
Turnover	7.5	15.2	(19.5)	(9.1)
EBITDA	(86.5)	280.0	(17.4)	(12.3)
Pre-tax profit	(109.5)	n.a.	98.1	(19.1)
Net profit	(101.5)	n.a.	85.4	(17.7)
Net profit (adj.)	(53.6)	1.8	(10.3)	(8.8)
EPS	(53.6)	1.8	(10.3)	(8.8)
Leverage				
Debt to total capital	32.8	37.6	39.0	37.0
Debt to equity	52.1	64.6	69.1	63.3
Net debt/(cash) to equity	(13.5)	33.8	22.7	3.0
Interest cover (x)	0.7	2.1	3.4	3.0

TRADERS' CORNER



Propnex (PROP SP)

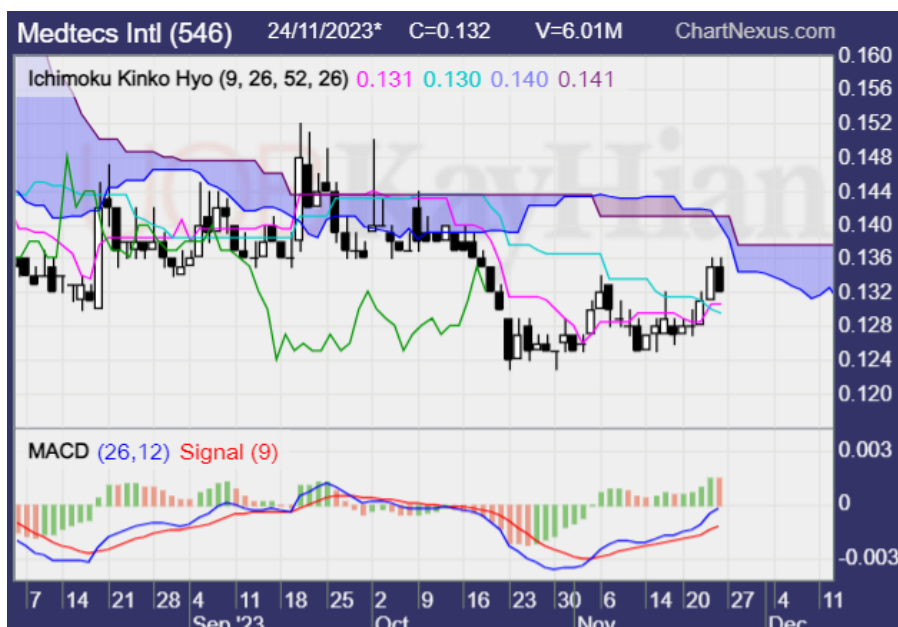
Trading Buy Range: S\$0.860-0.865
 Last price: S\$0.880
 Target price: S\$0.945
 Protective stop: S\$0.835

Price rebounded after being supported by the middle Bollinger band, aka the 20-day moving average. The 20MA is rising, suggesting potential upside ahead. MACD is bullish and is rising. These could increase chances of the stock price moving higher.

The potential upside target is S\$0.945. Stop-loss could be placed at S\$0.835.

Approximate timeframe on average: 1-2 weeks (initiate this trade idea if the stock hits the entry price range within three trading days)

Our institutional research has a fundamental BUY and target price of S\$1.23.



Medtecs International (MED SP)

Trading Sell Range: S\$0.134-0.135
 Last price: S\$0.132
 Target price: S\$0.115
 Protective stop: S\$0.139

Price is trading below the cloud, keeping the downtrend intact. It could be forming a potential bearish flag pattern. MACD remains bearish and a bearish crossover is likely. These could increase chances of the stock price continuing to move lower.

The potential downside target is S\$0.115. Stop-loss could be placed at S\$0.139.

Approximate timeframe on average: 1-2 weeks (initiate this trade idea if the stock hits the entry price range within three trading days)

ANALYST(S)
Wong Shueh Ting, CFTe
 +65 6590 6616
 shuehting@uobkayhian.com

Disclosures/Disclaimers

This report is prepared by UOB Kay Hian Private Limited ("UOBKH"), which is a holder of a capital markets services licence and an exempt financial adviser in Singapore.

This report is provided for information only and is not an offer or a solicitation to deal in securities or to enter into any legal relations, nor an advice or a recommendation with respect to such securities.

This report is prepared for general circulation. It does not have regard to the specific investment objectives, financial situation and the particular needs of any recipient hereof. Advice should be sought from a financial adviser regarding the suitability of the investment product, taking into account the specific investment objectives, financial situation or particular needs of any person in receipt of the recommendation, before the person makes a commitment to purchase the investment product.

This report is confidential. This report may not be published, circulated, reproduced or distributed in whole or in part by any recipient of this report to any other person without the prior written consent of UOBKH. This report is not directed to or intended for distribution to or use by any person or any entity who is a citizen or resident of or located in any locality, state, country or any other jurisdiction as UOBKH may determine in its absolute discretion, where the distribution, publication, availability or use of this report would be contrary to applicable law or would subject UOBKH and its connected persons (as defined in the Financial Advisers Act, Chapter 110 of Singapore) to any registration, licensing or other requirements within such jurisdiction.

The information or views in the report ("Information") has been obtained or derived from sources believed by UOBKH to be reliable. However, UOBKH makes no representation as to the accuracy or completeness of such sources or the Information and UOBKH accepts no liability whatsoever for any loss or damage arising from the use of or reliance on the Information. UOBKH and its connected persons may have issued other reports expressing views different from the Information and all views expressed in all reports of UOBKH and its connected persons are subject to change without notice. UOBKH reserves the right to act upon or use the Information at any time, including before its publication herein.

Except as otherwise indicated below, (1) UOBKH, its connected persons and its officers, employees and representatives may, to the extent permitted by law, transact with, perform or provide broking, underwriting, corporate finance-related or other services for or solicit business from, the subject corporation(s) referred to in this report; (2) UOBKH, its connected persons and its officers, employees and representatives may also, to the extent permitted by law, transact with, perform or provide broking or other services for or solicit business from, other persons in respect of dealings in the securities referred to in this report or other investments related thereto; (3) the officers, employees and representatives of UOBKH may also serve on the board of directors or in trustee positions with the subject corporation(s) referred to in this report. (All of the foregoing is hereafter referred to as the "Subject Business"); and (4) UOBKH may otherwise have an interest (including a proprietary interest) in the subject corporation(s) referred to in this report.

As of the date of this report, no analyst responsible for any of the content in this report has any proprietary position or material interest in the securities of the corporation(s) which are referred to in the content they respectively author or are otherwise responsible for.

IMPORTANT DISCLOSURES FOR U.S. PERSONS

This research report was prepared by UOBKH, a company authorized, as noted above, to engage in securities activities in Singapore. UOBKH is not a registered broker-dealer in the United States and, therefore, is not subject to U.S. rules regarding the preparation of research reports and the independence of research analysts. This research report is provided for distribution by UOBKH (whether directly or through its US registered broker dealer affiliate named below) to "major U.S. institutional investors" in reliance on the exemption from registration provided by Rule 15a-6 of the U.S. Securities Exchange Act of 1934, as amended (the "Exchange Act"). All US persons that receive this document by way of distribution from or which they regard as being from UOBKH by their acceptance thereof represent and agree that they are a major institutional investor and understand the risks involved in executing transactions in securities.

Any U.S. recipient of this research report wishing to effect any transaction to buy or sell securities or related financial instruments based on the information provided in this research report should do so only through UOB Kay Hian (U.S.) Inc ("UOBKHUS"), a registered broker-dealer in the United States. Under no circumstances should any recipient of this research report effect any transaction to buy or sell securities or related financial instruments through UOBKH.

UOBKHUS accepts responsibility for the contents of this research report, subject to the terms set out below, to the extent that it is delivered to and intended to be received by a U.S. person other than a major U.S. institutional investor.

The analyst whose name appears in this research report is not registered or qualified as a research analyst with the Financial Industry Regulatory Authority ("FINRA") and may not be an associated person of UOBKHUS and, therefore, may not be subject to applicable restrictions under FINRA Rules on communications with a subject company, public appearances and trading securities held by a research analyst account.

Analyst Certification/Regulation AC

Each research analyst of UOBKH who produced this report hereby certifies that (1) the views expressed in this report accurately reflect his/her personal views about all of the subject corporation(s) and securities in this report; (2) the report was produced independently by him/her; (3) he/she does not carry out, whether for himself/herself or on behalf of UOBKH or any other person, any of the Subject Business involving any of the subject corporation(s) or securities referred to in this report; and (4) he/she has not received and will not receive any compensation that is directly or indirectly related or linked to the recommendations or views expressed in this report or to any sales, trading, dealing or corporate finance advisory services or transaction in respect of the securities in this report. However, the compensation received by each such research analyst is based upon various factors, including UOBKH's total revenues, a portion of which are generated from UOBKH's business of dealing in securities.

Reports are distributed in the respective countries by the respective entities and are subject to the additional restrictions listed in the following table.

General	This report is not intended for distribution, publication to or use by any person or entity who is a citizen or resident of or located in any country or jurisdiction where the distribution, publication or use of this report would be contrary to applicable law or regulation.
Hong Kong	This report is distributed in Hong Kong by UOB Kay Hian (Hong Kong) Limited ("UOBKHHK"), which is regulated by the Securities and Futures Commission of Hong Kong. Neither the analyst(s) preparing this report nor his associate, has trading and financial interest and relevant relationship specified under Para. 16.4 of Code of Conduct in the listed corporation covered in this report. UOBKHHK does not have financial interests and business relationship specified under Para. 16.5 of Code of Conduct with the listed corporation covered in this report. Where the report is distributed in Hong Kong and contains research analyses or reports from a foreign research house, please note: (i) recipients of the analyses or reports are to contact UOBKHHK (and not the relevant foreign research house) in Hong Kong in respect of any matters arising from, or in connection with, the analysis or report; and (ii) to the extent that the analyses or reports are delivered to and intended to be received by any person in Hong Kong who is not a professional investor, or institutional investor, UOBKHHK accepts legal responsibility for the contents of the analyses or reports only to the extent required by law.
Indonesia	This report is distributed in Indonesia by PT UOB Kay Hian Sekuritas, which is regulated by Financial Services Authority of Indonesia ("OJK"). Where the report is distributed in Indonesia and contains research analyses or reports from a foreign research house, please note recipients of the analyses or reports are to contact PT UOBKH (and not the relevant foreign research house) in Indonesia in respect of any matters arising from, or in connection with, the analysis or report.
Malaysia	Where the report is distributed in Malaysia and contains research analyses or reports from a foreign research house, the recipients of the analyses or reports are to contact UOBKHM (and not the relevant foreign research house) in Malaysia, at +603-21471988, in respect of any matters arising from, or in connection with, the analysis or report as UOBKHM is the registered person under CMSA to distribute any research analyses in Malaysia.
Singapore	This report is distributed in Singapore by UOB Kay Hian Private Limited ("UOBKH"), which is a holder of a capital markets services licence and an exempt financial adviser regulated by the Monetary Authority of Singapore. Where the report is distributed in Singapore and contains research analyses or reports from a foreign research house, please note: (i) recipients of the analyses or reports are to contact UOBKH (and not the relevant foreign research house) in Singapore in respect of any matters arising from, or in connection with, the analysis or report; and (ii) to the extent that the analyses or reports are delivered to and intended to be received by any person in Singapore who is not an accredited investor, expert investor or institutional investor, UOBKH accepts legal responsibility for the contents of the analyses or reports only to the extent required by law.
Thailand	This report is distributed in Thailand by UOB Kay Hian Securities (Thailand) Public Company Limited, which is regulated by the Securities and Exchange Commission of Thailand.
United Kingdom	This report is being distributed in the UK by UOB Kay Hian (U.K.) Limited, which is an authorised person in the meaning of the Financial Services and Markets Act and is regulated by The Financial Conduct Authority. Research distributed in the UK is intended only for institutional clients.
United States of America ('U.S.')	This report cannot be distributed into the U.S. or to any U.S. person or entity except in compliance with applicable U.S. laws and regulations. It is being distributed in the U.S. by UOB Kay Hian (US) Inc, which accepts responsibility for its contents. Any U.S. person or entity receiving this report and wishing to effect transactions in any securities referred to in the report should contact UOB Kay Hian (US) Inc. directly.

Copyright 2023, UOB Kay Hian Pte Ltd. All rights reserved.

<http://research.uobkayhian.com>

RCB Regn. No. 197000447W